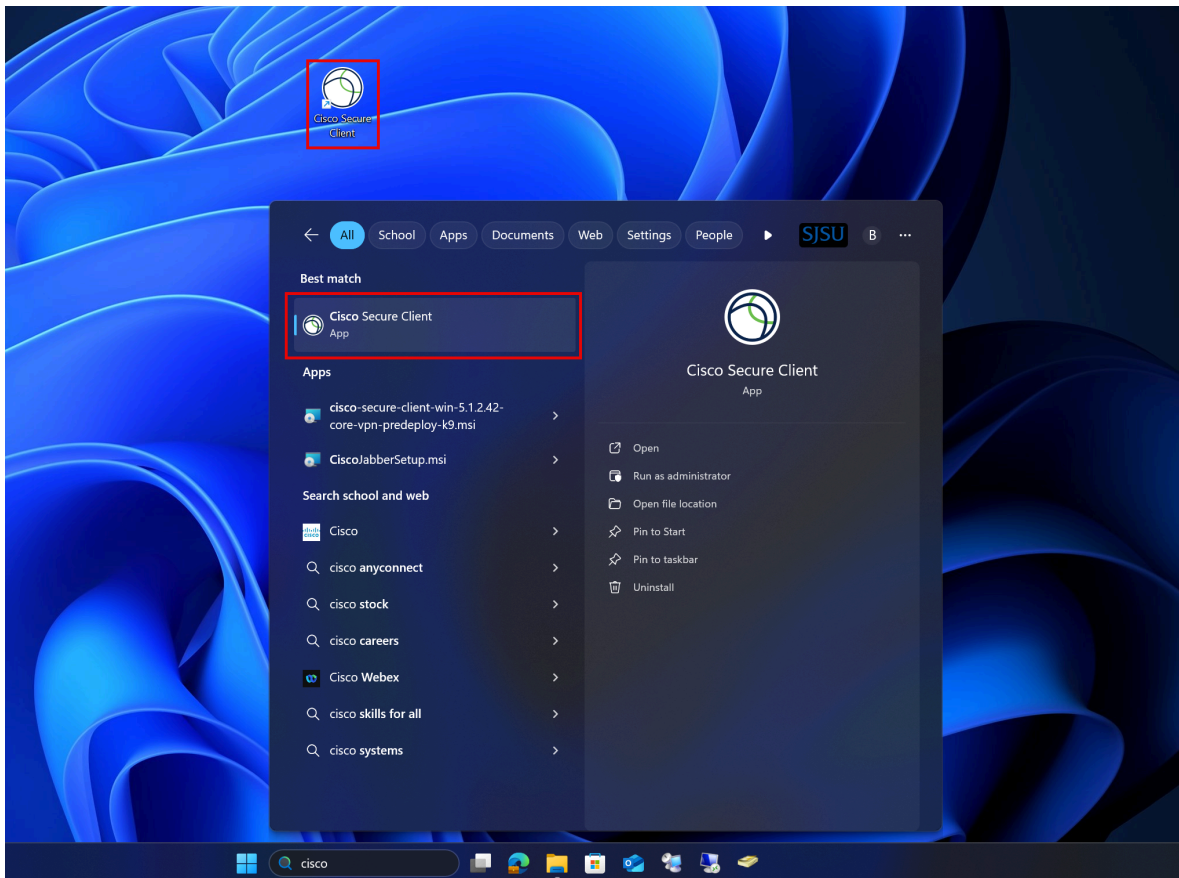
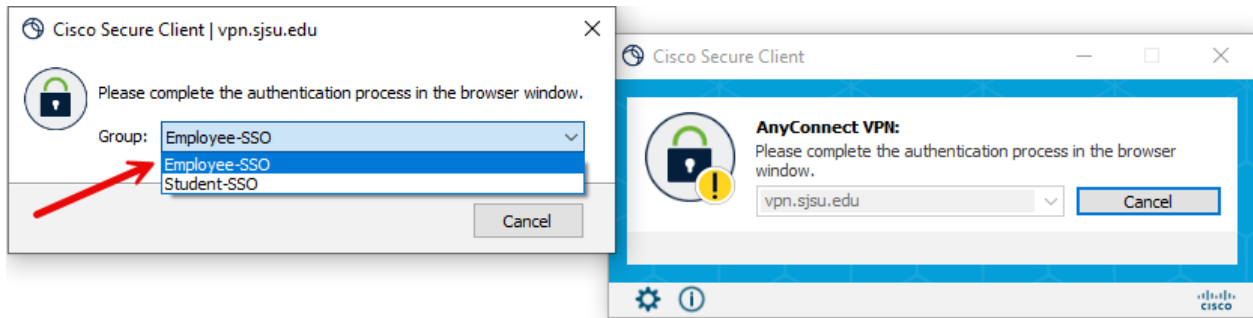


How to Connect to SJSU VPN Using Cisco Secure Client (for Microsoft Windows)

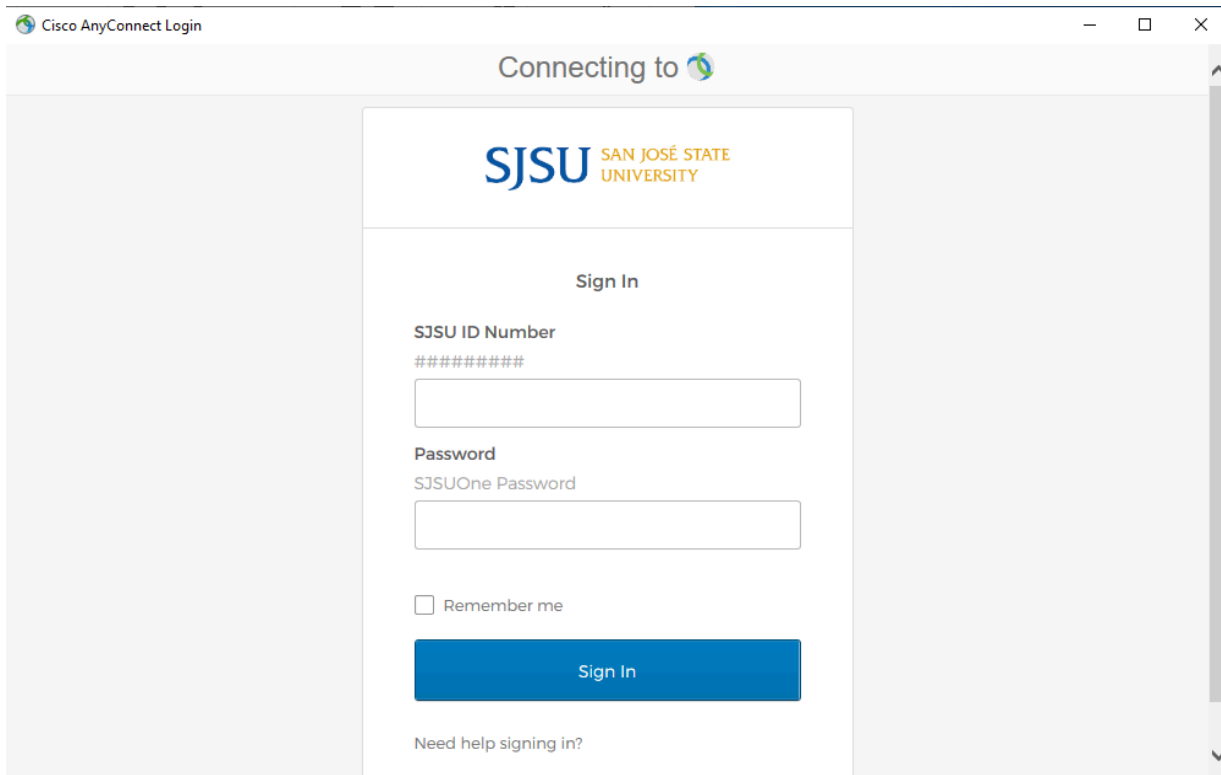
1. If you haven't already, please submit a ticket to IT requesting [VPN access here](#).
2. If the Cisco AnyConnect client is not installed on your computer, please see the [How to Install Cisco AnyConnect for SJSU VPN here](#).
 - a. If you're using an SJSU-issued computer and need assistance with installing the VPN Client, please contact your [IT Support Tech](#).
3. Once the VPN Client is installed, double-click the **Cisco Secure Client** shortcut on the Desktop or search for **Cisco Secure Client** in the search bar. On the bottom right, a small window should appear.



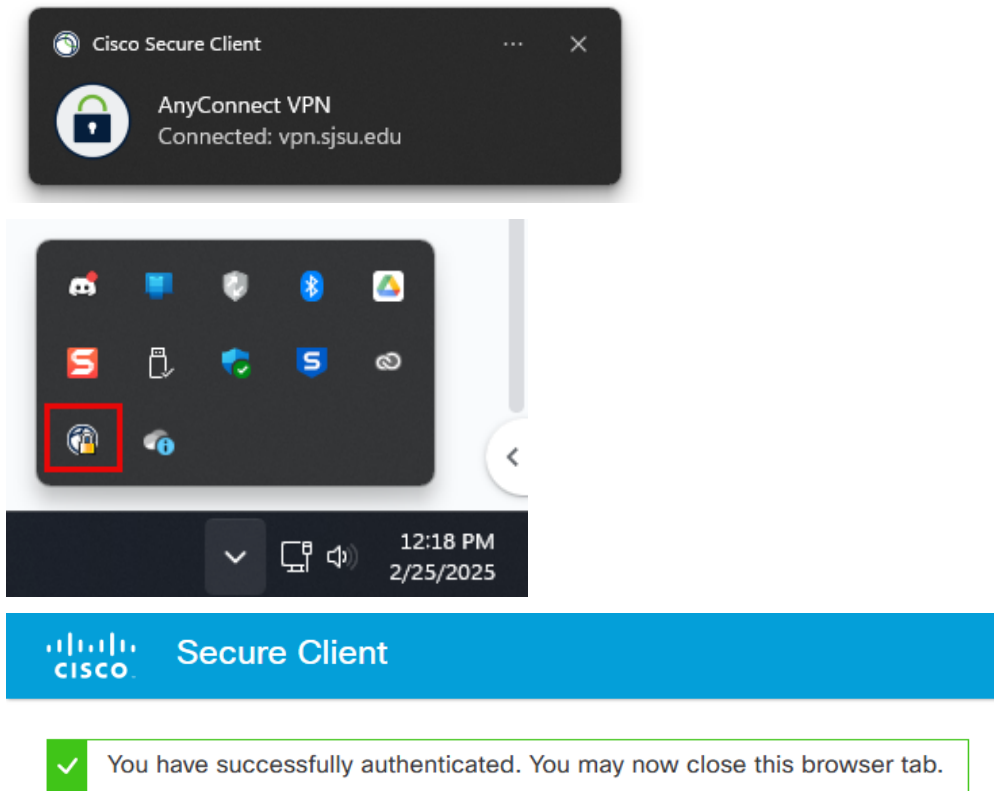
4. In the box, type **vpn.sjsu.edu**. Click **Connect**.
5. When prompted for your Group:
 - a. For Faculty and Staff, select the **“Employee-SSO”** group
 - b. For Students, select the **“Student-SSO”** group



6. A web browser window will pop up with a Single-Sign On page, similar to how you log into other one.sjsu.edu apps. Log in with your SJSUOne ID and password and complete the Duo Two-Factor prompt that follows.
 - a. If you happen to already be logged into an SJSU resource, this step may be automatically skipped, and you will not be prompted to enter your credentials.



7. After logging in, the computer will connect to the SJSU Network. If you see any of the following, you have successfully connected to the SJSU Network.



8. When you're done using SJSU VPN, you can click the "Disconnect" box.